

BROADSIDE

ZAITZ DONATES PROPERTY

Unbelievable but true, we finally have a house to restore into a headquarters/museum. Max Zaitz has donated a property on Southfield Road which includes a c1840 farmhouse.

The farmhouse is basically of sound construction, but will need replacement or repair of its utilities and restoration of its exterior and interior. We have had a brief report from the Township Engineer, but will have to have more detailed reports from bidding heating, plumbing and electrical contractors, as well as from general contractors and termite control companies. The amount needed to bring the house into useable condition was estimated at \$100,000, with probably another \$50,000 for problems not yet discovered.

At the moment the Society has \$15,000+ in its account. We will begin to apply for appropriate grants and plan fund-raisers to help earn the money we will need.

All members are urged to assist by enlisting new members, and by paying your dues. We hope that members will want to offer their services on this challenging project.

Some of you may be asking, "What about the Rogers house?" After nine years of negotiations with the Parks Commissioners, they produced a 5 year lease, with three renewals of 5 years each, a total of 20 years. At the end of each 5-year segment, the Park could take the house back, leaving us with nothing to show for our funds and our labor.



However, we have not abandoned the Rogers House. In our letter to the Parks Commissioners and Board of Chosen Freeholders, we offered our services in trying to find another organization willing to take on the restoration of the house. Further, we made several suggestions as to how the Rogers House could be used by the Park itself.

There is no reason why the house should not be maintained by the Park, since they own it and therefore have full responsibility for its care and protection. If you have any suggestions as to possible groups willing to assist the County in restoring the Rogers House, please let them know. Also, if you feel strongly about the house, do write to the County and let them know you care.

We hope you will be excited at the challenge of the Southfield Road property. Your expertise, financial and moral support are greatly needed. Please let us have your comments and suggestions on the project and hear from you on how you would be able to help.

**MERCER COUNTY HISTORIC SITES SURVEY: WEST WINDSOR TOWNSHIP, 1988 -
Prepared for Mercer County Cultural & Heritage Commission and Office of N.J. Heritage,
N.J. Dept. of Environmental Protection
Prepared by Susanne C. Hand, with the assistance of Robert W. Craig**

Description of House on Southfield Road

Construction Dates - Eighteenth Century, c1840s, with later alterations.

Form/Plan Type - Side hall plan with lateral wing

The house, now clad in asbestos shingles, has a three-bay, 2-1/2 story double pile main block and a long, lower recessed 2 story wing. The original section appears to be the western end of the wing (now the kitchen, with a large, open fireplace and low ceiling and no basement). This section has two windows and a door. The middle section has a door and 2/2 window, serves as the dining room, and has a fireplace between dining room and kitchen. This whole wing was raised from 1-1/2 to 2 stories c1905 and has a simple, turned-post across the facade.

The main block sets on a stone foundation and has a door with simple trim and a 4-paned transom above; 2/2 and one 6/6 windows, a simple 2-bay Victorian turned-post porch, cornice returns on a bracketless roof cornice, two interior end chimneys, and currently a blank gable end.

Inside the double parlors have been opened up and have Italianate round-arched mantels. The stairway is, rather surprisingly, closed string. An upstairs bedroom has a nice vernacular fireplace mantel.

The rear of the house is flush. The original section has a closed center door and small flanking windows.

Related Structures - The house is set back from the road and faces south. At the rear is a rubble stone smokehouse. To the south is a wagon barn with sliding doors, and a small tenant house.

Significance - This house represents an interesting, and only partially understood, evolution from the Eighteenth through the Twentieth Centuries, which may be pertinent to other houses of the area. The original section was apparently a 1-1/2 story house (now the kitchen located in the end bay of the wing). This was expanded at an unknown date, and the large double pile side hall plan main block probably was added in the 1830s or 1840s. The whole 1-1/2 story wing was raised to 2 stories c1905.

One surprising feature is the enclosed stairway in the main block, which is a more vernacular feature than one would expect from a double pile side hall plan house. A charming vernacular Federal style mantel survives in the rear bedroom of the main block.

RECEPTION FOR MAX ZAITZ FAMILY

To honor Max Zaitz and his family for their generous donation of the property on Southfield Road, the Historical Society will give a Reception in their honor on Sunday, May 5, at the Castle, Tamarack Farms, Bear Brook Road.

Members of the Society, in good standing; members of the Township Committee, Planning Board and other Township committee volunteers; as well as members of the Historic Associations of Central Jersey; West Windsor business, community, education, and religious leaders will be invited. Be sure your 1991 dues have been paid so you will be certain to receive an invitation.



Historical Society of West Windsor
 P.O. Box 38
 Princeton Junction, NJ 08550
 Attention: Kay Reed, Treasurer

Please check the appropriate box:

- FAMILY MEMBERSHIP—\$12. per year
- SINGLE MEMBERSHIP—\$8. per year
- FULL-TIME STUDENT MEMBERSHIP—\$5. per year
- SENIOR CITIZEN MEMBERSHIP—\$5. per year
- SENIOR CITIZEN MEMBERSHIP/80 Years Plus—Free Lifetime Membership
- ORGANIZATION MEMBERSHIP (One Vote/One Representative)—\$25. per year

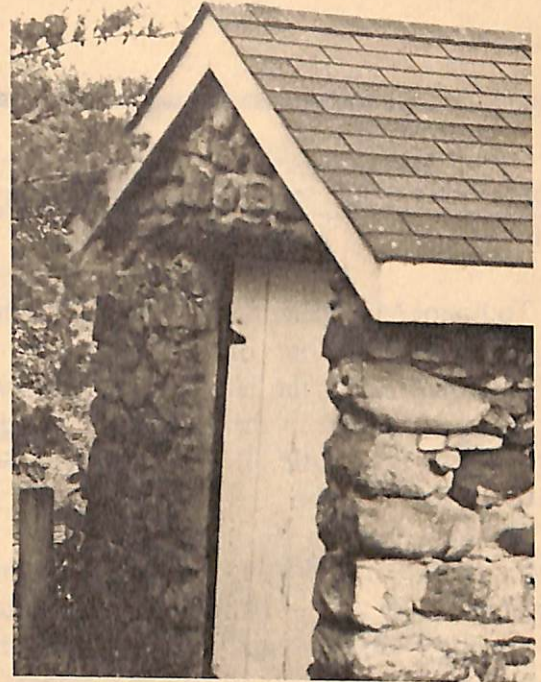
NAME (INCLUDE ALL NAMES IF FAMILY MEMBERSHIP)

MAILING ADDRESS

TELEPHONE NUMBER

Additional Donation—\$ _____

Amount Enclosed—\$ _____



The Historical Society of West Windsor
P.O. Box 38, Princeton Junction, N.J. 08550